

REEVES SUPPLY CO., INC.

130 Dickerson Road • Franklin, GA 30217

1-888-854-5221 • Fax: 770-854-5540



TUNNEL INLET DOORS

TABLE OF CONTENTS

sheet no.

Table Of Contents -----	1
General Drawing -----	2
Framing Elevation & Details -----	3
Gasket Installation -----	4
Door Assembly With Handle Types -----	5
Lever Type Door Elevation and Details -----	6
Bolt Type Door Elevation -----	7
Winch End (Wall Mounted) -----	8
Winch End (Roof Mounted)-----	9
Anchor End or Spring End - Materials Provided -----	10

FOREWORD:

In order to assure proper performance and smooth functioning of the system the installer must understand the importance of quality construction and use of straight quality materials. Attention to details relating to sealing or prevention of air leaks is a must.

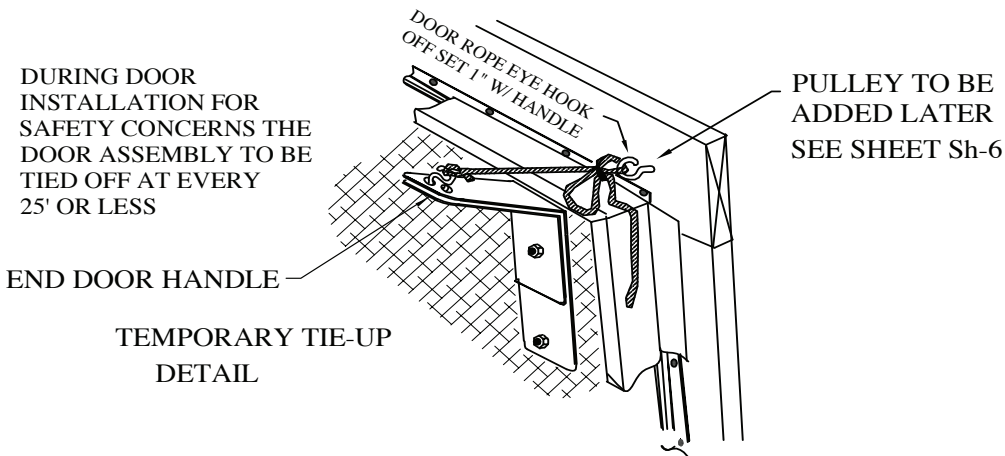
The tunnel door opening (framing) should be flat and straight in the vertical and horizontal planes. Use of tight string line is recommended. The framed opening should be level to a tolerance of plus 1/4" to minus 1/4" from end to end. The use of an optical level will be necessary. Particular attention to installing the 2x4 Hinge Board level is required. Any minor out of level with the first door section will rapidly become a major problem as following door panels are installed.

Gasket installation to follow framing and caulking. Reference Sh-4 for details installing gaskets. Prior to nailing gaskets in place the full length to be stretched out and inspected for any damages or deformations such as twist or tares. Note the bottom "P" gasket comes as double roll. Therefore it requires separating. See Detail Sh-4.

Door installation is next. Two important points about door installation: First- Take care not to damage the gaskets. Particularly the bottom "P" gasket. Avoid or minimize sliding door on top of bottom gasket. Second - Assure the first door section is installed level.

As the door installation continues the weight of the assembled doors will require tying off for safety. Consider the weight of the doors along with wind or other potential forces that could over turn the doors. Tie off at 25' or less. See sketch below. Check Winch options for location of eye hook above door. See Sh-5 bottom page.

Now the door winch and counter weight or spring to be installed. Next the control cable can now be installed. Note location of control cable eye hooks must not interfere with door rope clamp range of travel. The door rope eye hooks to be installed, rotated 45° and closed. See Sh-8 & Sh-9.



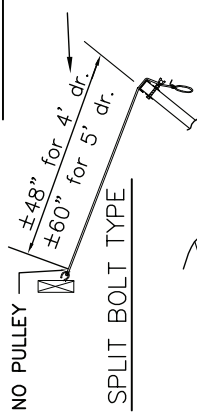
REEVES SUPPLY CO., INC.

130 Dickerson Road • Franklin, GA 30217

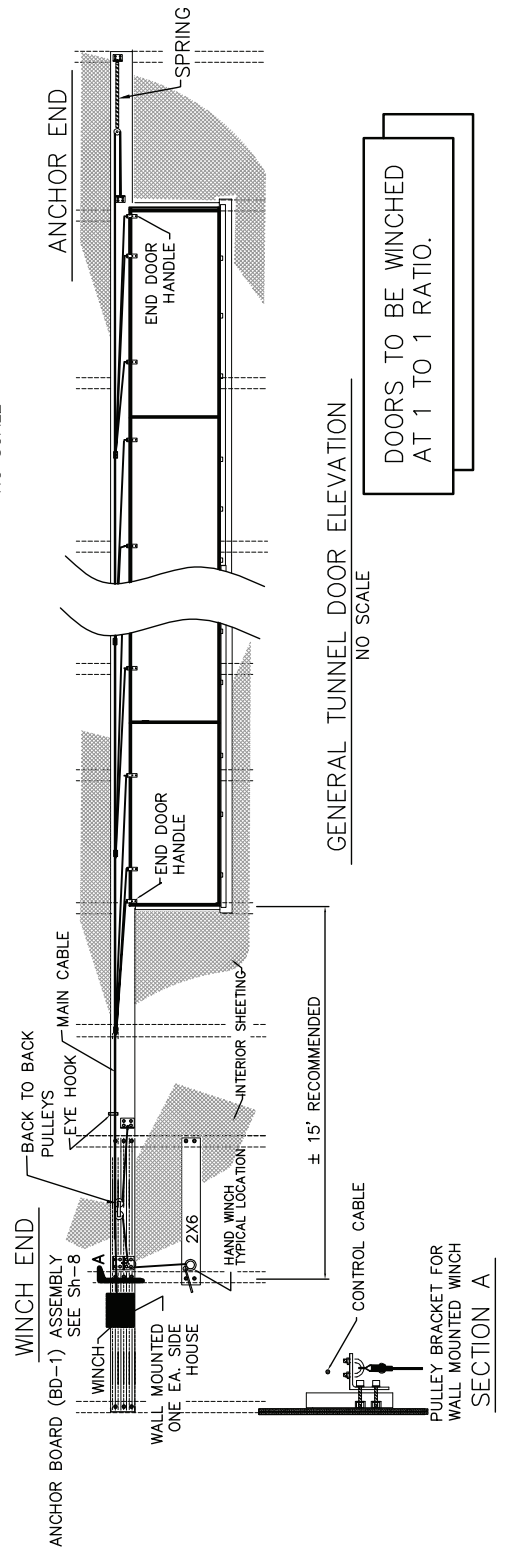
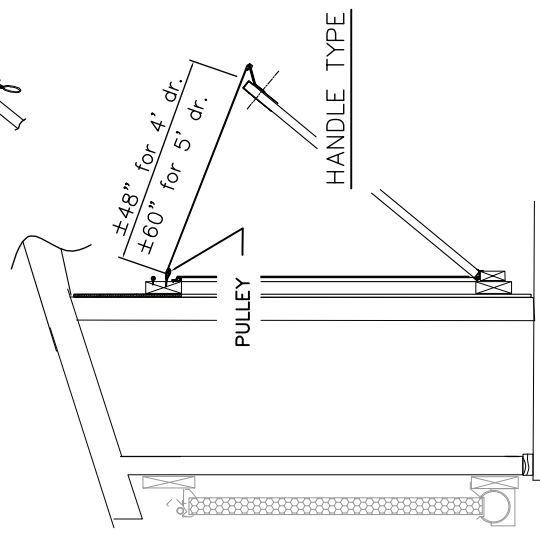
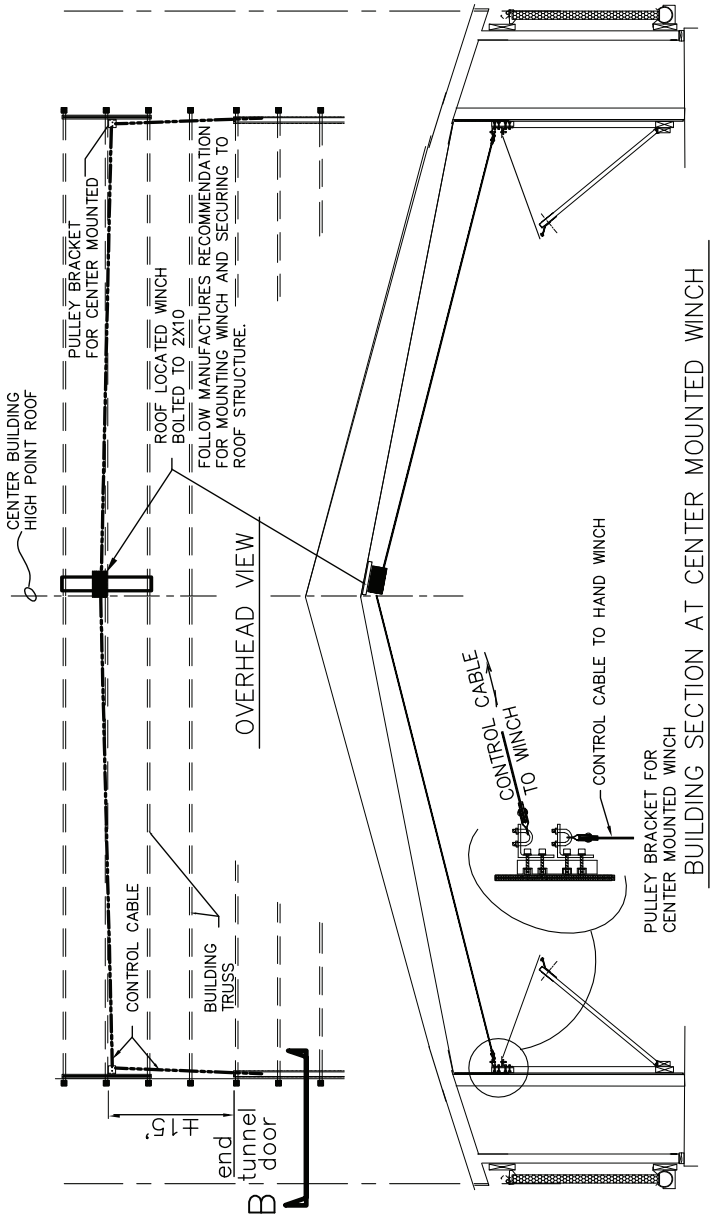
1-888-854-5221 • Fax: 770-854-5540

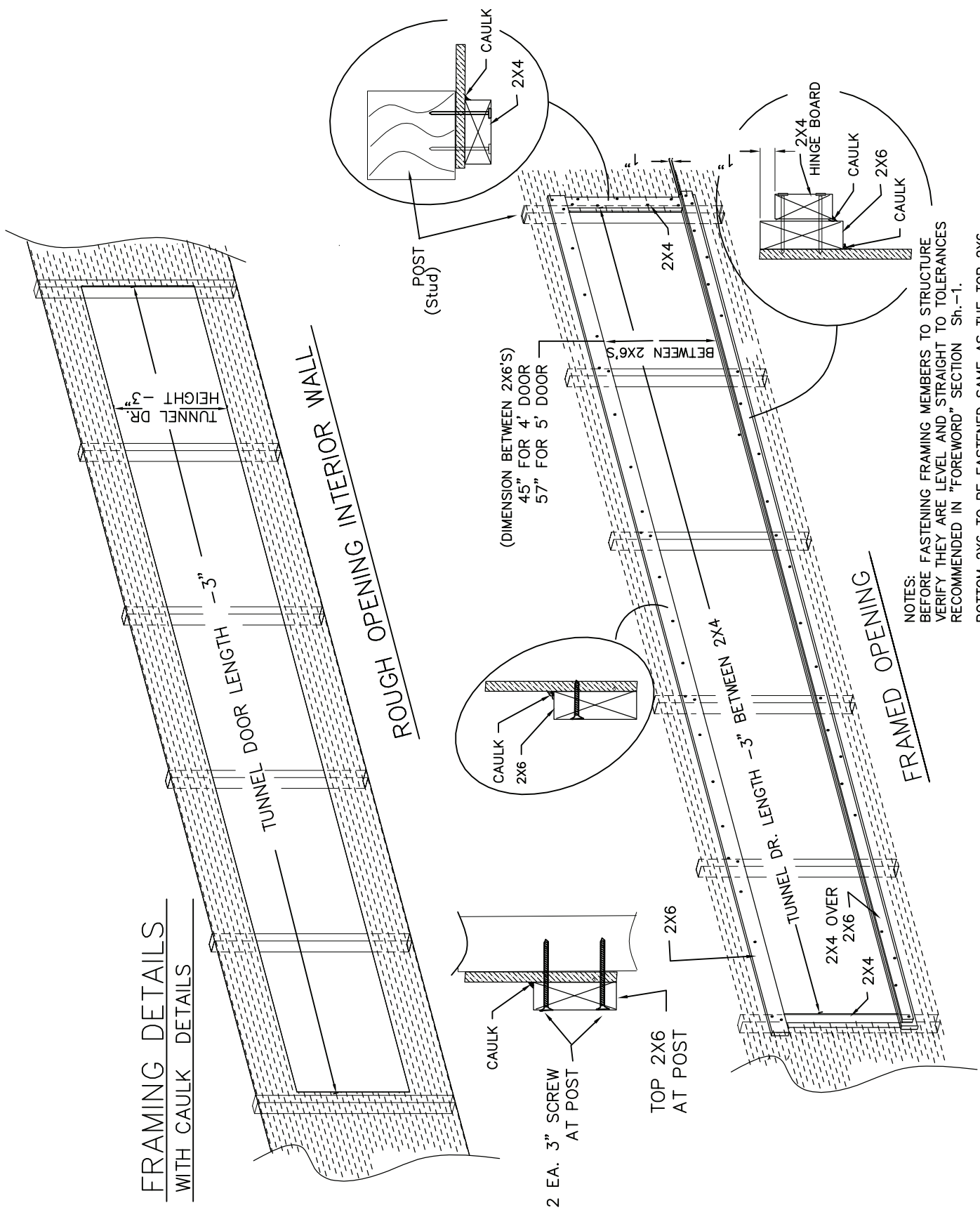
GENERAL DRAWING

see Sh-10 for materials provided information



MINIMUM DOOR ROPE TRAVEL OR DISTANCE DOOR OPENS





NOTES:
 BEFORE FASTENING FRAMING MEMBERS TO STRUCTURE
 VERIFY THEY ARE LEVEL AND STRAIGHT TO TOLERANCES
 RECOMMENDED IN "FOREWORD" SECTION Sh.-1.
 BOTTOM 2X6 TO BE FASTENED SAME AS THE TOP 2X6

REEVES SUPPLY CO., INC.
 130 Dickerson Road • Franklin, GA 30217
 1-888-854-5221 • Fax: 770-854-5540

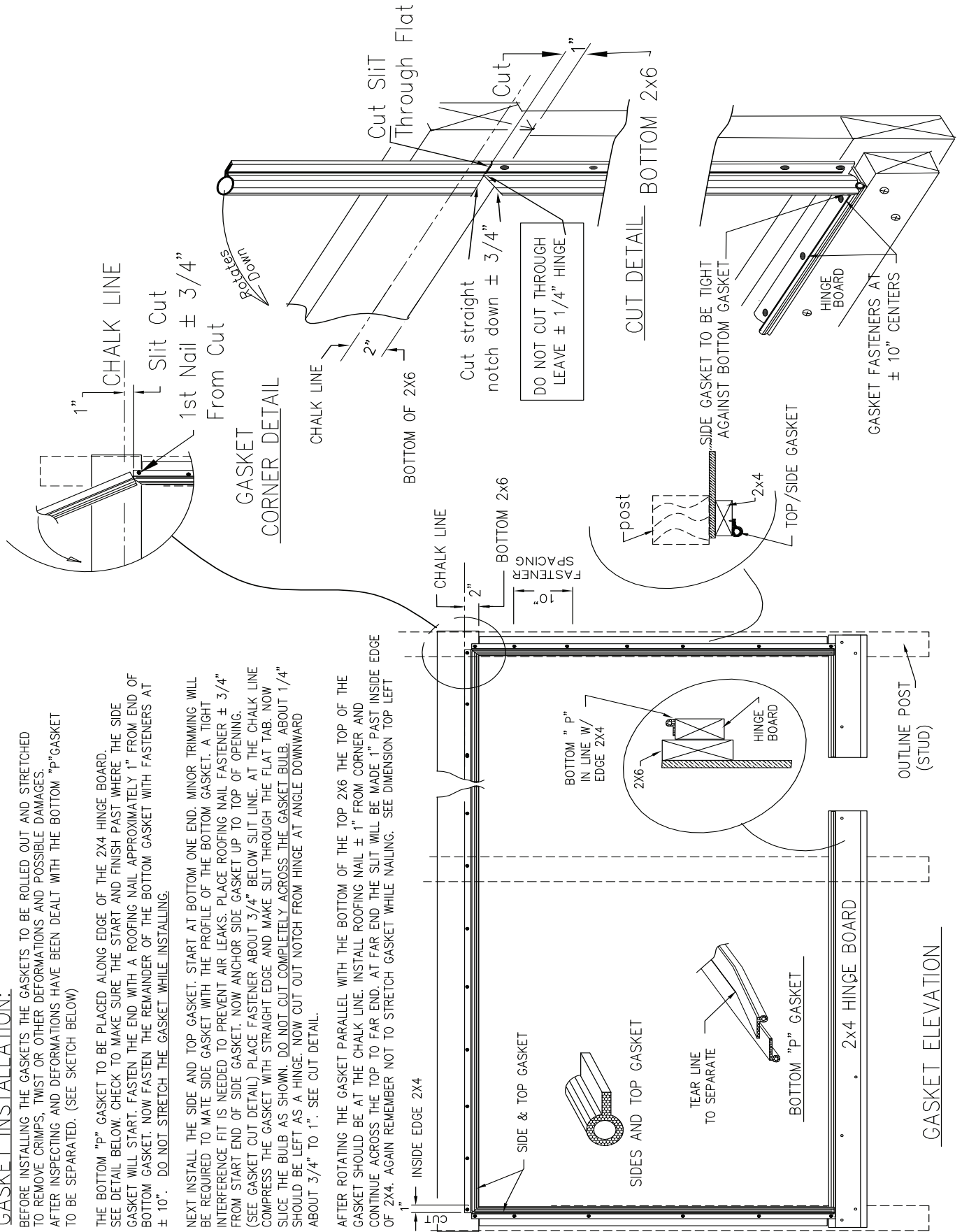
GASKET INSTALLATION:

BEFORE INSTALLING THE GASKETS THE GASKETS TO BE ROLLED OUT AND STRETCHED TO REMOVE CRIMPS, TWIST OR OTHER DEFORMATIONS AND POSSIBLE DAMAGES. AFTER INSPECTING AND DEFORMATIONS HAVE BEEN DEALT WITH THE BOTTOM "P" GASKET TO BE SEPARATED. (SEE SKETCH BELOW)

THE BOTTOM "P" GASKET TO BE PLACED ALONG EDGE OF THE 2X4 HINGE BOARD. SEE DETAIL BELOW. CHECK TO MAKE SURE THE START AND FINISH PAST WHERE THE SIDE GASKET WILL START. FASTEN THE END WITH A ROOFING NAIL APPROXIMATELY 1" FROM END OF BOTTOM GASKET. NOW FASTEN THE REMAINDER OF THE BOTTOM GASKET WITH FASTENERS AT ± 10". DO NOT STRETCH THE GASKET WHILE INSTALLING.

NEXT INSTALL THE SIDE AND TOP GASKET. START AT BOTTOM ONE END. MINOR TRIMMING WILL BE REQUIRED TO MATE SIDE GASKET WITH THE PROFILE OF THE BOTTOM GASKET. A TIGHT INTERFERENCE FIT IS NEEDED TO PREVENT AIR LEAKS. PLACE ROOFING NAIL FASTENER ± 3/4" FROM START END OF SIDE GASKET. NOW ANCHOR SIDE GASKET UP TO TOP OF OPENING. (SEE GASKET CUT DETAIL) PLACE FASTENER ABOUT 3/4" BELOW SLIT LINE. AT THE CHALK LINE COMPRESS THE GASKET WITH STRAIGHT EDGE AND MAKE SLIT THROUGH THE FLAT TAB. NOW SLICE THE BULB AS SHOWN. DO NOT CUT COMPLETELY ACROSS THE GASKET BULB. ABOUT 1/4" SHOULD BE LEFT AS A HINGE. NOW CUT OUT NOTCH FROM HINGE AT ANGLE DOWNWARD ABOUT 3/4" TO 1". SEE CUT DETAIL.

AFTER ROTATING THE GASKET PARALLEL WITH THE BOTTOM OF THE TOP 2X6 THE TOP OF THE GASKET SHOULD BE AT THE CHALK LINE. INSTALL ROOFING NAIL ± 1" FROM CORNER AND CONTINUE ACROSS THE TOP TO FAR END. AT FAR END THE SLIT WILL BE MADE 1" PAST INSIDE EDGE OF 2X4. AGAIN REMEMBER NOT TO STRETCH GASKET WHILE NAILING. SEE DIMENSION TOP LEFT



REEVES SUPPLY CO., INC.

130 Dickerson Road • Franklin, GA 30217

1-888-854-5221 • Fax: 770-854-5540

DOOR ASSEMBLY:

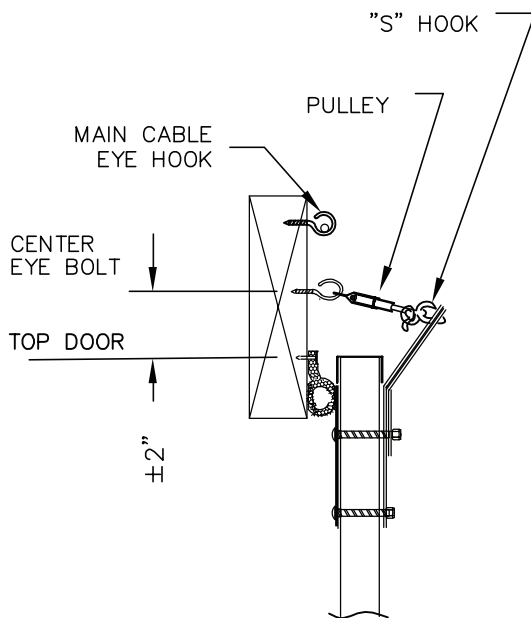
Each door panel to have minimum 2 (two) rope attachments. At each end of the assembled doors an End Door Rope connection to be installed. Rope attachments should be placed at no more than 60" apart. There are two types of door connections. The Handle and Split bolt type (see detail below).

The Handle type assembly is shown in greater detail on Sh-6. Use the reinforcement plate as template for locating the 2 ea. 3/8" dia holes through door. Hold the top of the reinforcement plate just below door cap channel interior side and mark locations. Check to make sure plate orientation is correct. For locating the End Door Handle place the reinforcement plate adjacent to the bottom leg top cap channel and inside leg of end channel. See Top Door View. When tightening the carriage bolt nuts make sure not to over compress the fiberglass doors.

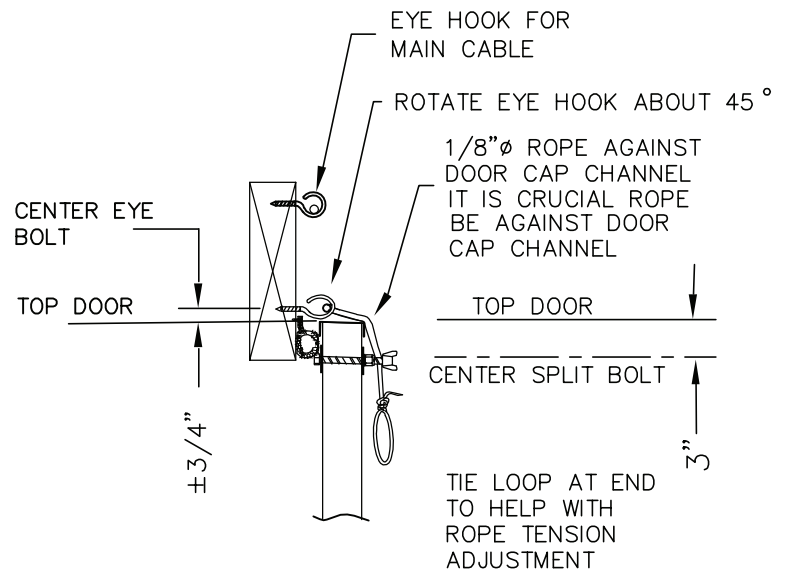
Split bolt type rope connection is detailed on Sh 7. The 1/2" diameter holes for the split bolts is located 3" down from top of door. The End Door Split Bolt location will be 3" down from top and 3" from edge of door excluding flange. See Door Elevation detail Sh-7. Again do not deform door by over tightening the nut.

Installing the doors. First door panel to be placed with side of door (excluding 1" flange) 1 1/2" past the opening. Remember the framed opening is 3" less than tunnel door overall length. See Sh-7. Check rope connection type for location of eye hook relative to connection. Note for handle eye hook location is 2" above and 1" off set toward winch end. Verify the first door panel section is installed level. Now hinge fasteners to be installed a. See details below for dimension between top of door and eye hook anchor. Use eye hook for temporary tie off. Allow some slack in the rope to help with "nesting" the doors together. Note over lapping flanges shown on Sh-6 Top Door View. Fasten the door panels together with 3 ea evenly spaced 5/16" dia x 3/4" self tapping Tec screws.

(see Sh-10 for materials supplied)



HANDLE TYPE



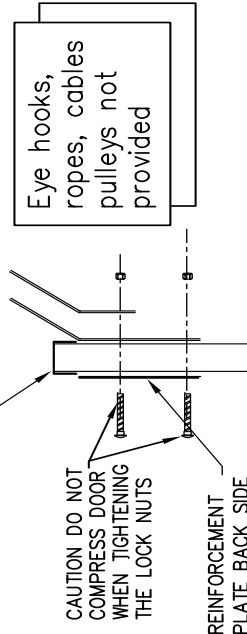
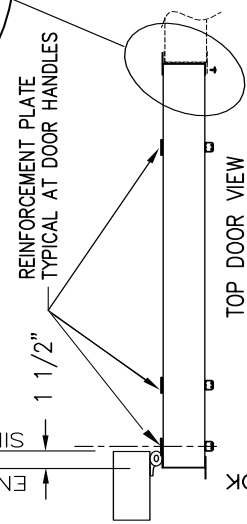
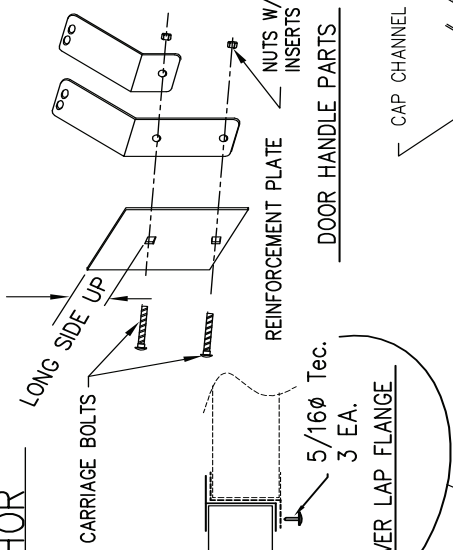
SPLIT BOLT TYPE

WINCH OPTIONS FOR
DOOR ROPE CONNECTION TYPES

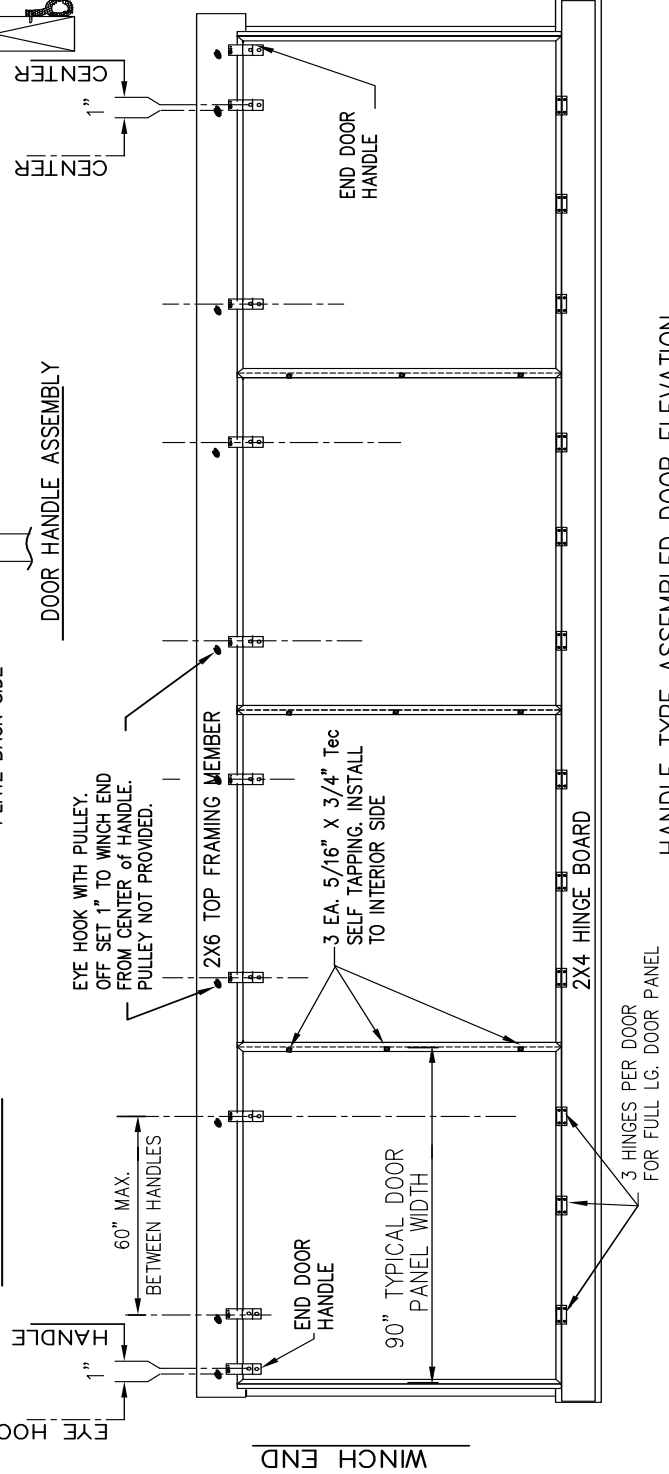
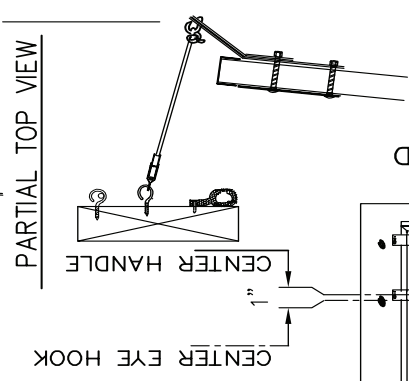
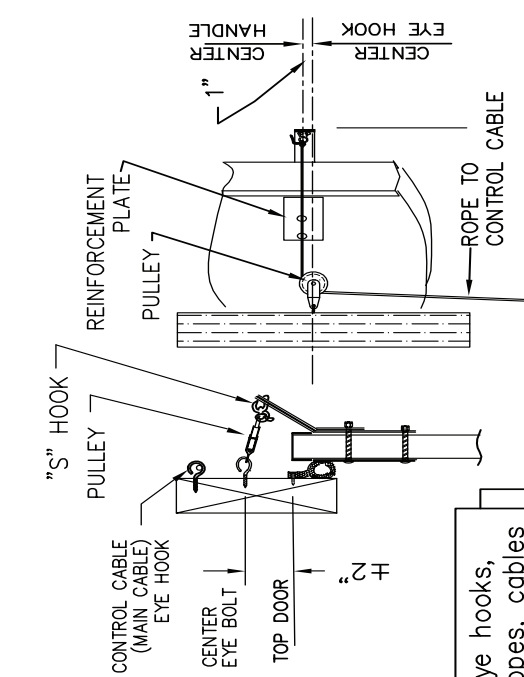
REEVES SUPPLY CO., INC.
130 Dickerson Road • Franklin, GA 30217
1-888-854-5221 • Fax: 770-854-5540

HANDLE TYPE DOOR ANCHOR

THE REINFORCEMENT PLATE TO BE USED AS TEMPLATE FOR LOCATING HOLES THROUGH DOORS. NOTE LONG SIDE UP. TOP OF REINFORCEMENT PLATE TO BE PLACED AGAINST THE CAP CHANNEL OF DOOR. FOR END DOOR HANDLES PLACE REINFORCEMENT PLATE AGAINST TOP CHANNEL AND SIDE CHANNEL ALONG EDGE OF DOOR.

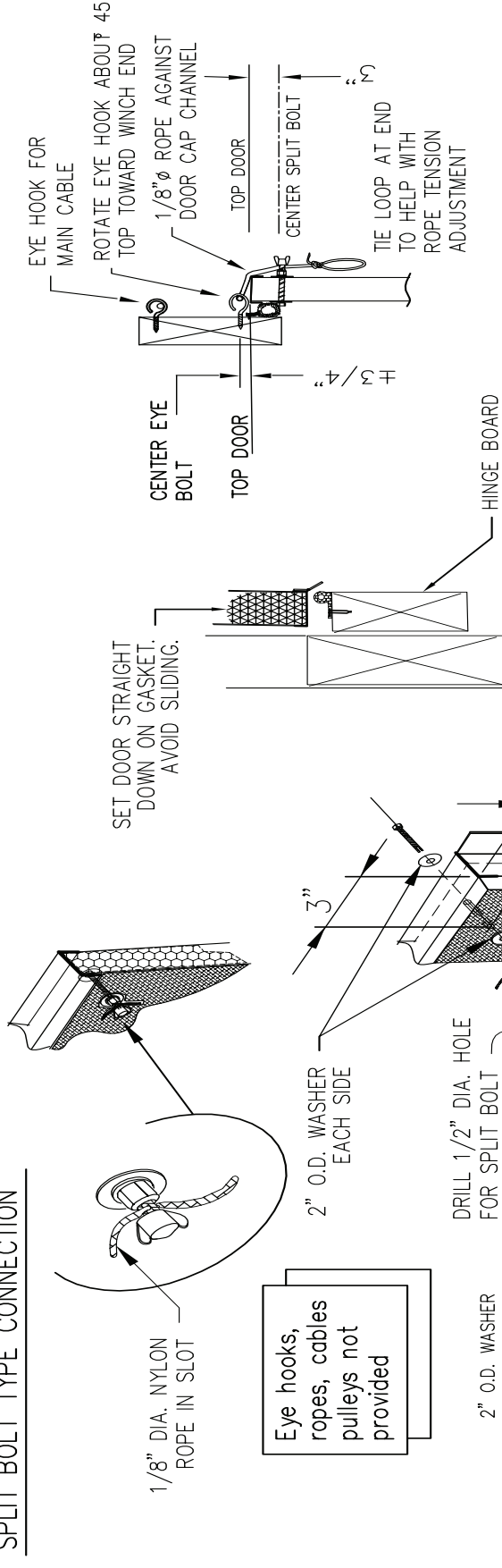


Eye hooks, ropes, cables pulleys not provided

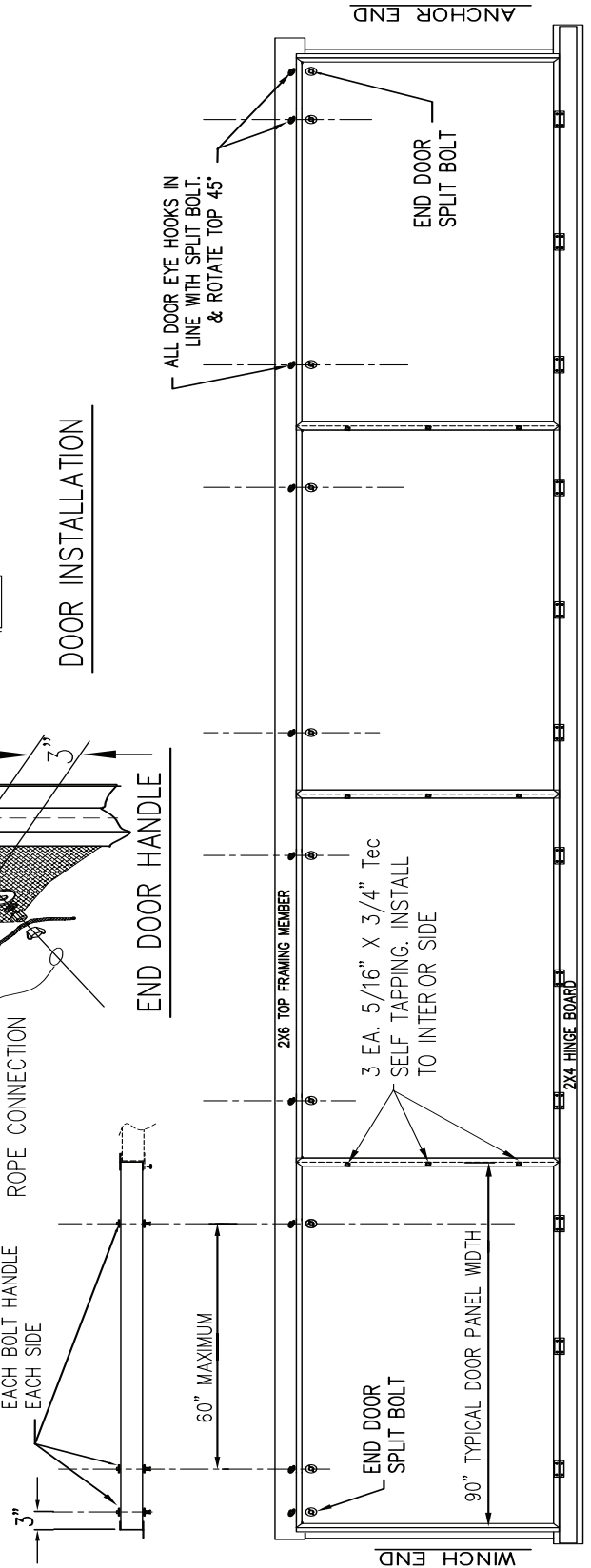


HANDLE TYPE ASSEMBLED DOOR ELEVATION

SPLIT BOLT TYPE CONNECTION



DOOR INSTALLATION

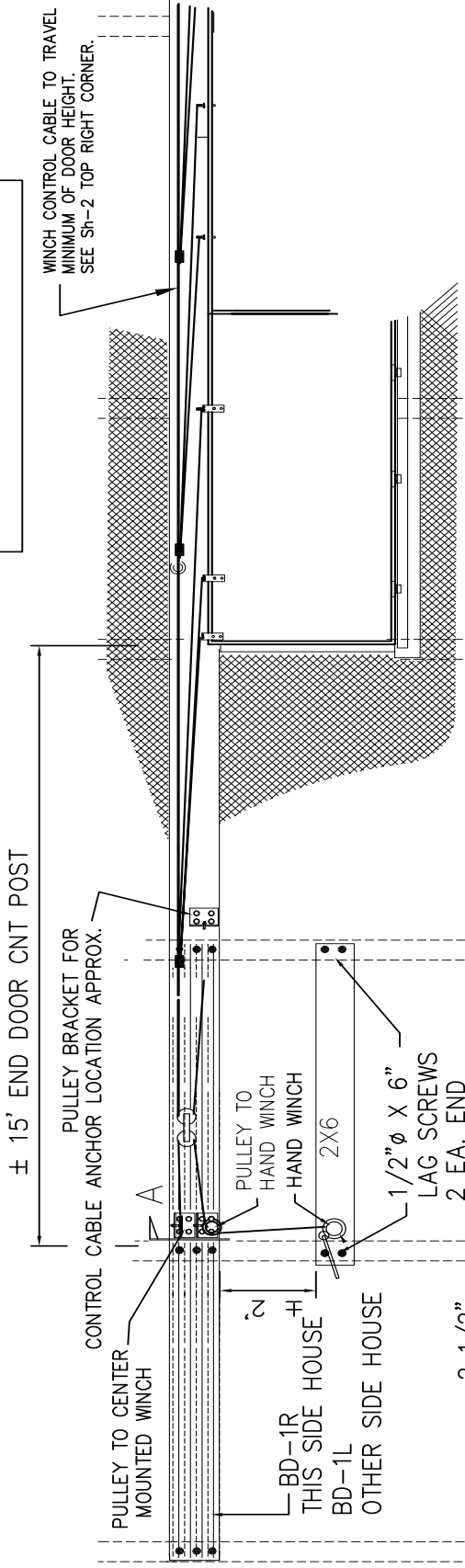


REEVES SUPPLY CO., INC.
 130 Dickerson Road • Franklin, GA 30217
 1-888-854-5221 • Fax: 770-854-5540

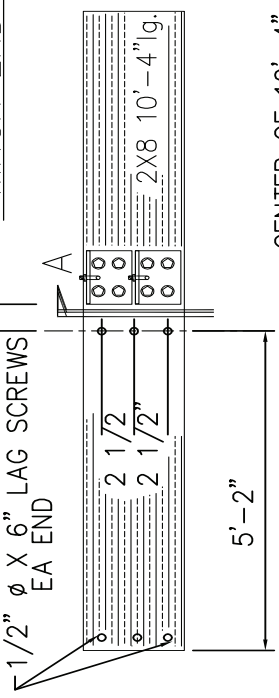
WINCH END DETAILS FOR SINGLE CENTER MOUNTED WINCH

SEE SHEET Sh-2 FOR REFERENCE
SEE SHEET Sh-9 FOR WALL MOUNTED WINCH

WINCH RATIO TO BE 1 TO 1

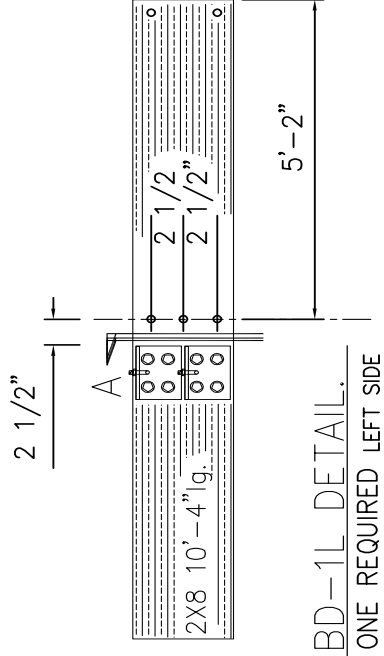


WINCH END ELEVATION FOR CENTER MOUNTED WINCH

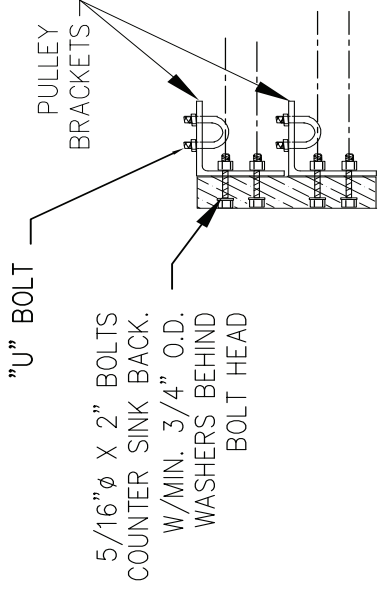


BD-1R DETAIL.
ONE REQUIRED RIGHT SIDE

CENTER OF 10'-4" 2X8
CENTER 9/16" Ø PILOT HOLES THRU 2X
FOR 1/2" Ø X 6" LAG SCREWS
W/WASHER AT CENTER OF POST



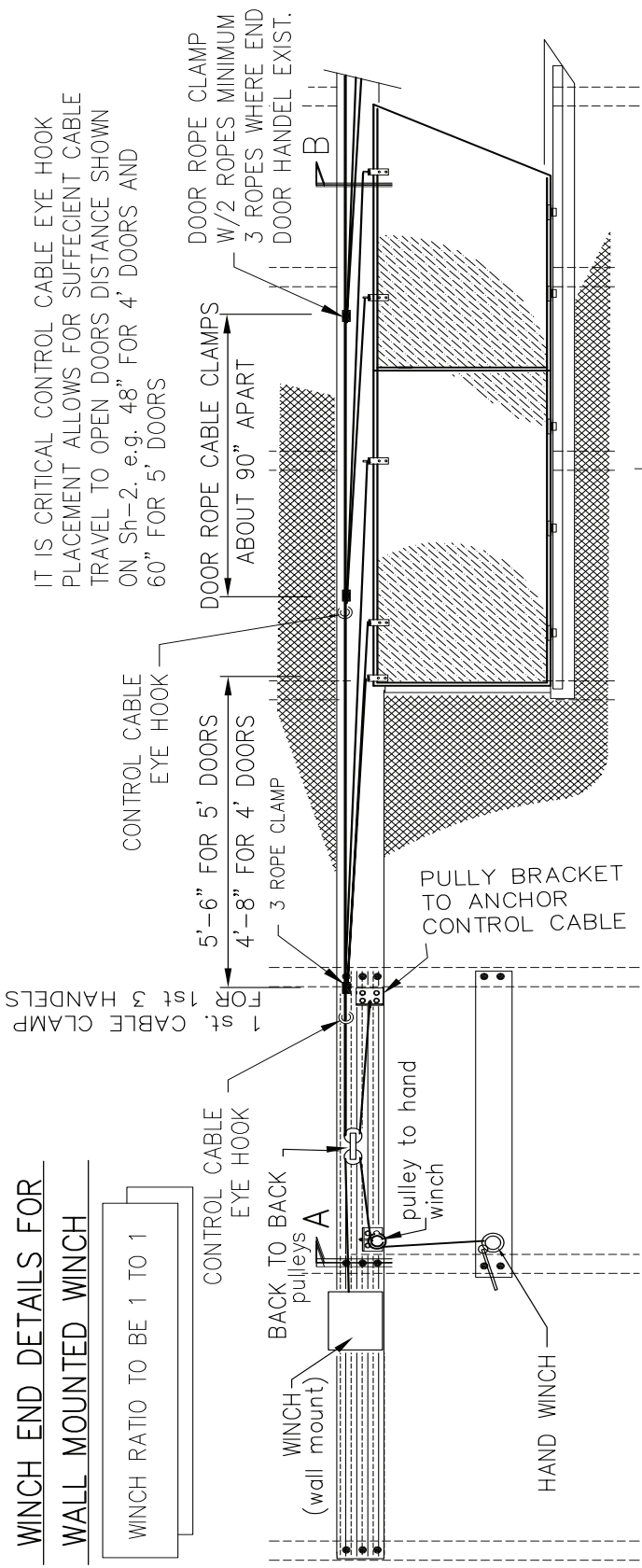
BD-1L DETAIL.
ONE REQUIRED LEFT SIDE



SECTION "A"
PULLEYS NOT SHOWN

**WINCH END DETAILS FOR
WALL MOUNTED WINCH**

WINCH RATIO TO BE 1 TO 1



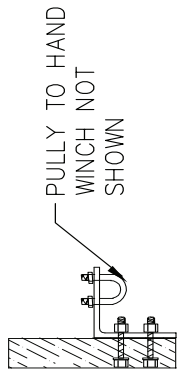
IT IS CRITICAL CONTROL CABLE EYE HOOK PLACEMENT ALLOWS FOR SUFFICIENT CABLE TRAVEL TO OPEN DOORS DISTANCE SHOWN ON Sh-2. e.g. 48" FOR 4' DOORS AND 60" FOR 5' DOORS

DOOR ROPE CLAMP W/2 ROPES MINIMUM 3 ROPES WHERE END DOOR HANDEL EXIST.

DOOR ROPE CABLE CLAMPS ABOUT 90" APART

CONTROL CABLE EYE HOOK 5'-6" FOR 5' DOORS 4'-8" FOR 4' DOORS

PULLY BRACKET TO ANCHOR CONTROL CABLE

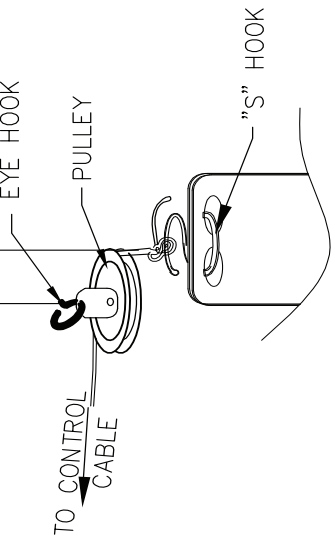


PULLY TO HAND WINCH NOT SHOWN



WITH PLIERS CRIMP EYE HOOK TO REDUCE GAP

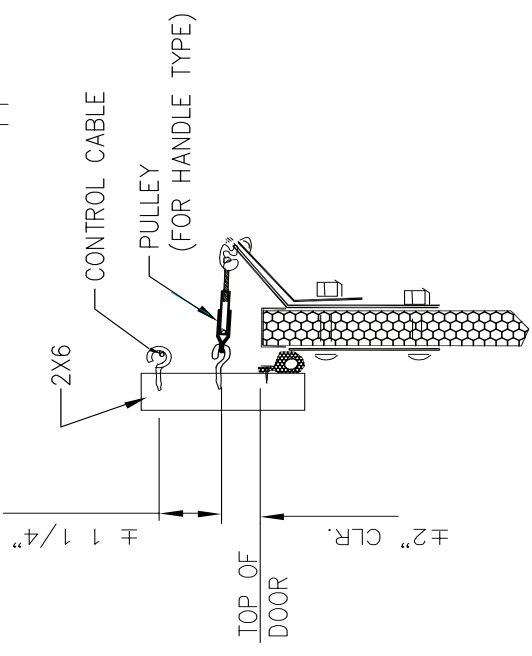
1" OFF SET



NOTE: FOR WALL MOUNTED WINCH SYSTEMS ONLY ONE (1) PULLEY IS REQUIRED.

SECTION "A"

DOOR EYE HOOK



SECTION "B"

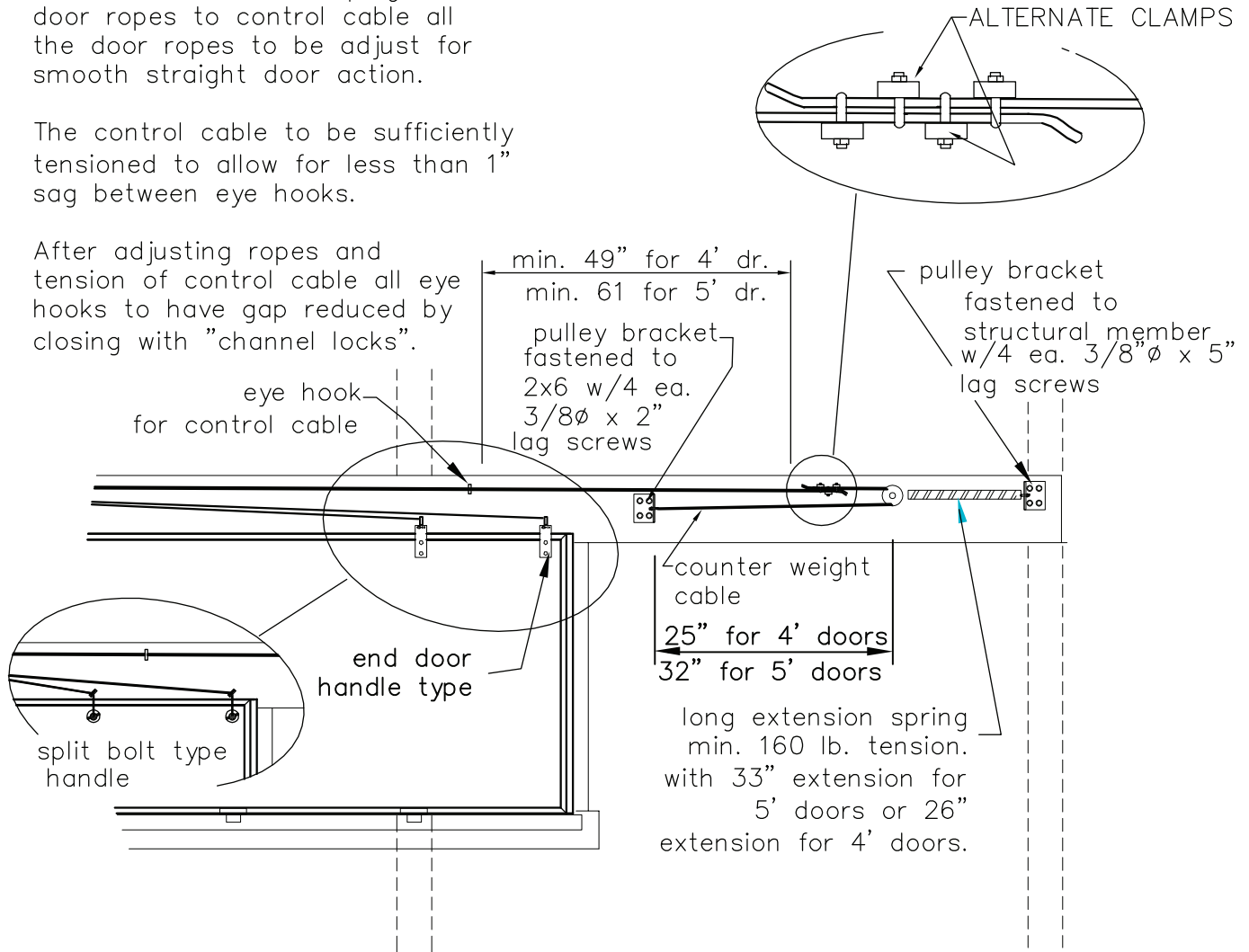
FOR SPLIT BOLT CONNECTION SEE SHEET 5

ANCHOR END

Following the routing of the control cable and clamping the door ropes to control cable all the door ropes to be adjust for smooth straight door action.

The control cable to be sufficiently tensioned to allow for less than 1" sag between eye hooks.

After adjusting ropes and tension of control cable all eye hooks to have gap reduced by closing with "channel locks".



Items provided by Reeves Supply Co. include but not limited to: Door panels, Door rope connections, Gaskets, Hinges, Tec Screws, Installation Manual

Items Not Provided Include but not limited to: winch, pulley clips, pulley, eye hooks, lag screws, regular nuts and bolts, hand winch, nails "U" bolts, lumber. cable, cable clamps 1/8" dia. rope, sealing caulk, springs

REEVES SUPPLY CO., INC.

130 Dickerson Road • Franklin, GA 30217

1-888-854-5221 • Fax: 770-854-5540